



APPLICATION GUIDE

For Apple iOS Devices

Table of contents

Introduction	2
Log in/Log out	2
Team Driving	3
Home Screen	4
Connecting to Truck	5
Malfunctions and Data Inconsistencies	6
Additional Menu	9
Rules	10
Fuel Receipts & IFTA	11
Settings	12
Status Switch	13
Personal Use	14
Yard Move	14
Logbook	15
DOT Inspection & Data Transfer	16
Driver Vehicle Inspection Report	17

Introduction

To stay compliant with FMCSA requirements, all drivers of commercial motor vehicles are obliged to log their driving history using Electronic Logging Devices (ELDs).

Responding to the needs of the industry, our team has developed the 24HOS ELD app — an all-in-one mobile elog designed to take your driving experience to a quality new level. Working in conjunction with the PT30 ELD device, the app displays engine diagnostics, driver status changes, provides GPS tracking, and more, helping to create a safer and more productive environment. It also assists drivers in logging their Hours of Service (HOS), completing the DVIR reports, passing DOT inspections, and transferring data to the safety officials for simple and affordable FMCSA compliance.

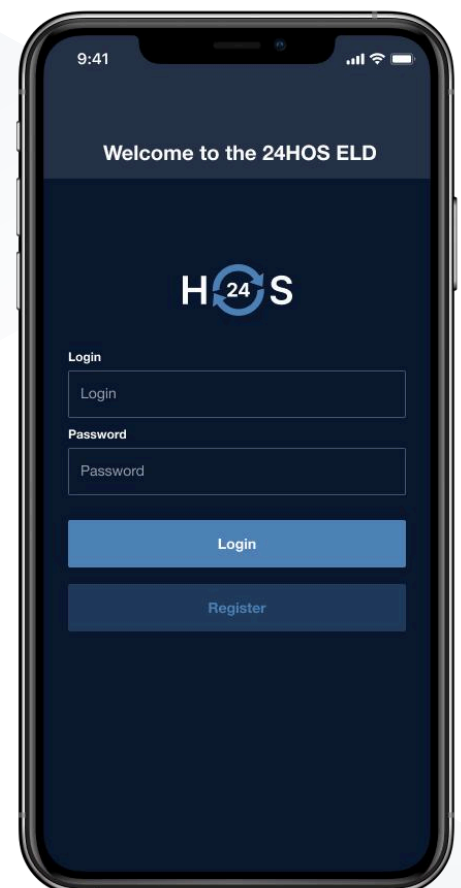
Rely on the 24HOS ELD app to stay on top of your performance!

Log in/Log Out

In the Google Play Store for Android devices or the iOS App Store for Apple devices, search for 24HOS ELD. After you find the app, you need to tap the Install button and wait until the software is downloaded into your device. Open the app and accept the permissions if asked.

To set up the 24HOS ELD app for the first time, you need to either register a new account, or log in with your personal User Login and User Password. You can also use Face ID/Touch ID to enter the app.

Please note that each User Login and User Password are unique and created during registration on our website. If you don't know or don't remember your login data, please contact your fleet manager or motor carrier.



Log in/Log Out

In case you want to log out of the 24HOS ELD app, you need to check if the Upload Queue in the Settings menu is empty. If not, please re-check your internet connection and wait until all the data is transferred. Only after that, you can log out of the app.

You should also log out of the app installed on your current device if you want to use the same app on another device. Being logged into two different devices simultaneously will lead to an unavoidable data loss.

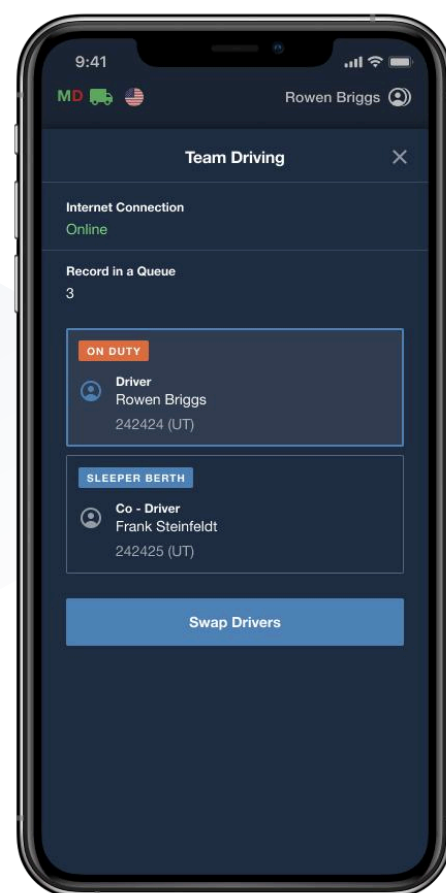
Team Driving

If you drive in a team, you can also use the 24HOS ELD app to log your working hours and duty statuses. To do so, all drivers operating the same vehicle are obliged to be logged in to the same app installed on the same device simultaneously.

Please note that using two or more devices at the same time is prohibited (for both single or team drivers) as it will lead to unavoidable data loss.

To get started, the First driver should log in to the app with their personal User Login and User Password as it was described in a previous paragraph. The Second driver should tap the Co-drivers icon in the top right corner of the Home Screen and enter their User Login and User Password in the Co-driver Login field.

After that, both drivers will be able to use the app by switching the viewing perspective with the help of the Co-drivers icon.



Home Screen

Once successfully logged in to the 24HOS ELD app, you will see the main Hours of Service screen with the following items:

1. Malfunctions and data

inconsistencies icon shows if there are any issues with a track or ELD.

2. Truck icon shows track to PT30 connection.

3. Flag icon shows the rules of which country you are following at the moment.

4. Name icon shows the name of the driver whose working hours are counting at the moment.

5. Co-driver icon allows to switch a driver.

6. Notifications.

7. Track speed.

8. Available driving time.

9. Current status.

10. Status switch menu.

11. HOS counter.

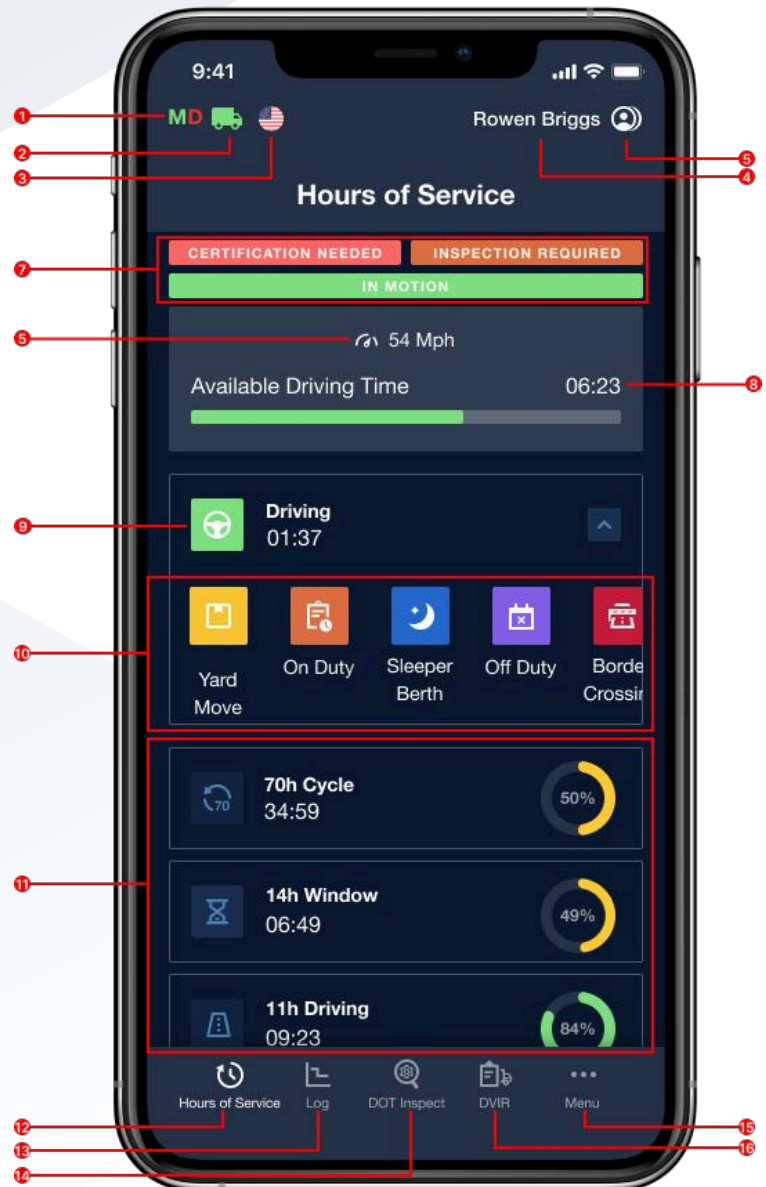
12. HOS menu icon.

13. Log menu icon.

14. DOT inspection menu icon.

15. DVIR menu icon.

16. Additional Menu icon.

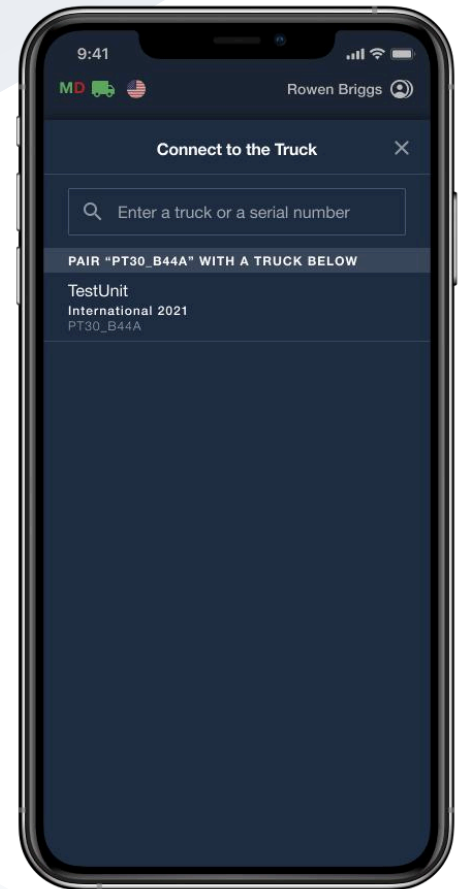


Connecting to Truck

To connect your 24HOS ELD app with your truck, make sure that the ELD device is correctly plugged into your truck as described in the Hardware Manual.

If everything is OK, you need to turn on the Bluetooth on your smartphone or tablet, open the app, and tap the Truck icon at the top of the Home Screen. The app will scan all the nearby trucks for the ELD device presence and show them as a list. Choose your truck and the ELD by the serial number from the list and set up a connection with one click.

The Green Truck icon at the top of the app screen means that the truck is connected and the system is in ELD mode. The Red Truck icon means that the connection was lost and it is required to be restored.



Malfunctions and Data Inconsistencies

As per FMCSA requirements, each ELD device must monitor its compliance with the ELD technical standards and detect malfunctions and data inconsistencies. The ELD output will identify these data diagnostic and malfunction events and their status as either "detected" or "cleared."

If there are any malfunctions or data diagnostic issues detected, the M/D icon at the top of the app screen will change its color from green to red. The red M letter will signal a malfunction, and the red D letter will indicate a data inconsistency.

According to FMCSA requirements (49 CFR § 395.34 ELD malfunctions and data diagnostic events), in the case of an ELD malfunction, a driver must do the following:

1. Note the malfunction of the ELD and provide written notice of the malfunction to the motor carrier within 24 hours.
2. Reconstruct the record of duty status for the current 24-hour period and the previous 7 consecutive days, and record the records of duty status on graph-grid paper logs that comply with §395.8, unless the driver already possesses the records or the records are retrievable from the ELD.
3. Continue to manually prepare a record of duty status in accordance with § 395.8 until the ELD is serviced and brought back into compliance with this subpart.

Note: If you are facing any issues during the DOT inspection, please be ready to provide the manually kept and filled RODS (records of duty status) to the roadside inspector.

Malfunctions and Data Inconsistencies

Malfunctions:

Engine Synchronization — no connection to the Engine Control Module (ECM). Contact the motor carrier and arrange for the ECM link to be restored. Check and correct the logs if needed, and restart the engine after that.

Positioning Compliance — no valid GPS signal. Can be fixed automatically by restoring the GPS signal.

Data Recording Compliance — device's storage is full. Delete some unnecessary files from your smartphone or tablet to provide at least 5 MB of free space.

Unregistered Odometer Change — odometer readings changed when a vehicle was not moving. Recheck the odometer data in the app or contact the motor carrier.

Timing compliance — ELD provides an incorrect timeframe for the events. Contact the motor carrier or the 24HOS ELD support team.

Power compliance — occur when an ELD is not powered for an aggregated in-motion driving time of 30 minutes or more over a 24-hour period across all driver profiles. Can be fixed automatically when aggregated in-motion driving time will be less than 30 minutes in 24-hour period

Malfunctions and Data Inconsistencies

Data diagnostic events:

Engine synchronization — ECM to ELD connection is lost. Contact the motor carrier and arrange for the ECM link to be restored.

Missing data elements — a temporary or permanent loss of the GPS/Internet connection or the ECM disconnection. Reconnect and reload the ELD device.

Unidentified driving records — unidentified driving lasts more than 30 minutes. Manage unidentified events until their duration drops to 15 minutes or less during a 24-hour period.

Data transfer — driving data cannot be transferred to the FMCSA server. Contact the motor carrier or the 24HOS ELD support team.

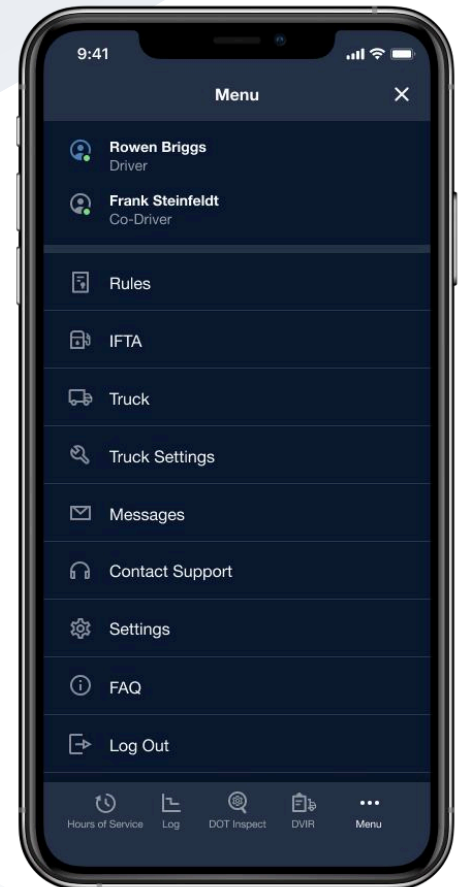
Power data diagnostic — The Engine was started while the device was off, and the ELD took more than 60 seconds to power up after turning the engine on. Can be fixed automatically once ELD is turned on or contact the motor carrier.

If you still have any questions regarding **ELD malfunctions or data inconsistencies**, please contact the 24HOS ELD support team via: phone: +13853424411 or email: safety24hos@gmail.com

Additional Menu

To open the Additional Menu click the three dots icon in the bottom right corner of the Home Screen. Here you will find some extra options, including:

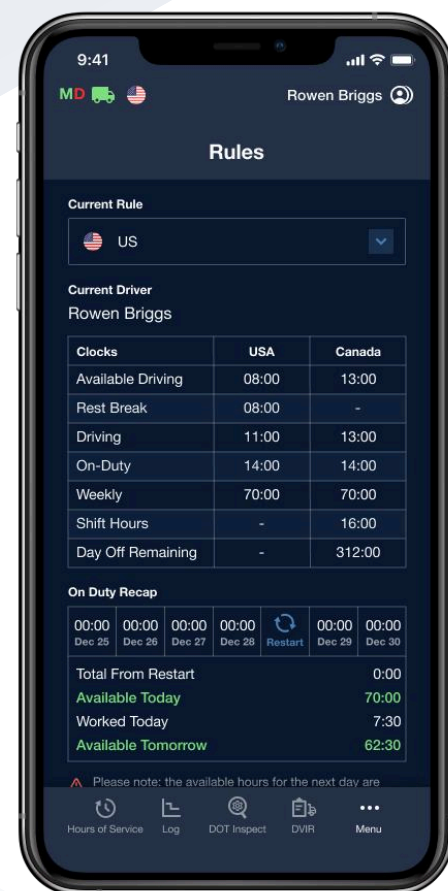
- 1. Drivers settings and personal info.** Can be added or edited.
- 2. Rules.** Here you can select and configure the HOS ruleset for the country in which you are operating.
- 3. IFTA.** Allows managing your fuel purchases.
- 4. Truck.** Allows to set and manage truck to ELD connection.
- 5. Truck Settings.** Shows truck odometer data.
- 6. Messages.** Keeps you in contact with fleet managers and a motor carrier.
- 7. Contact Support.** Opens a chat with the 24HOS ELD support team.
- 8. Setting.** Contains general app settings.
- 9. FAQ.**
- 10. Log Out.**



Rules

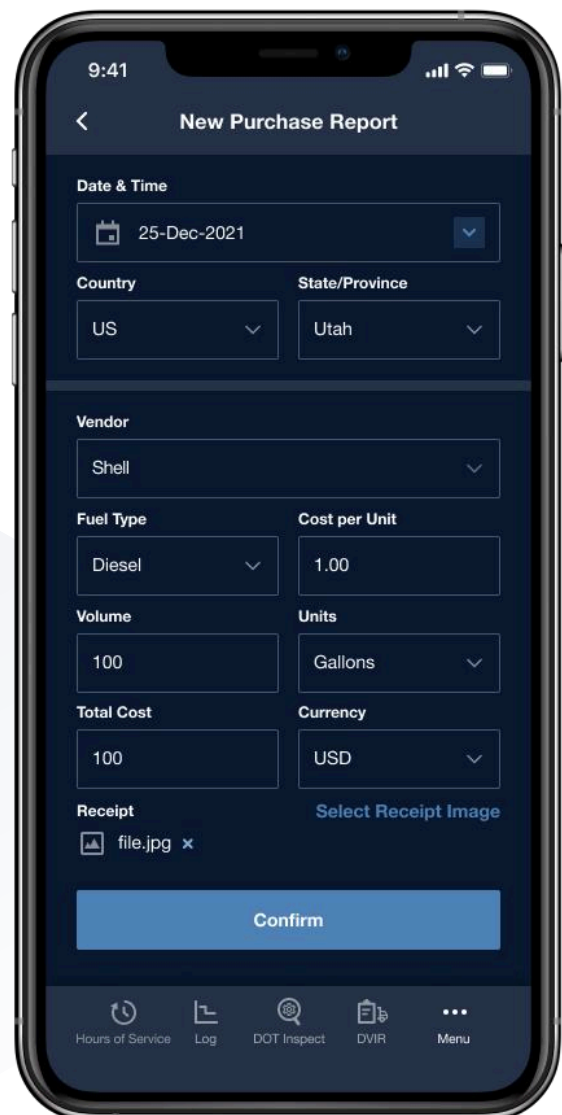
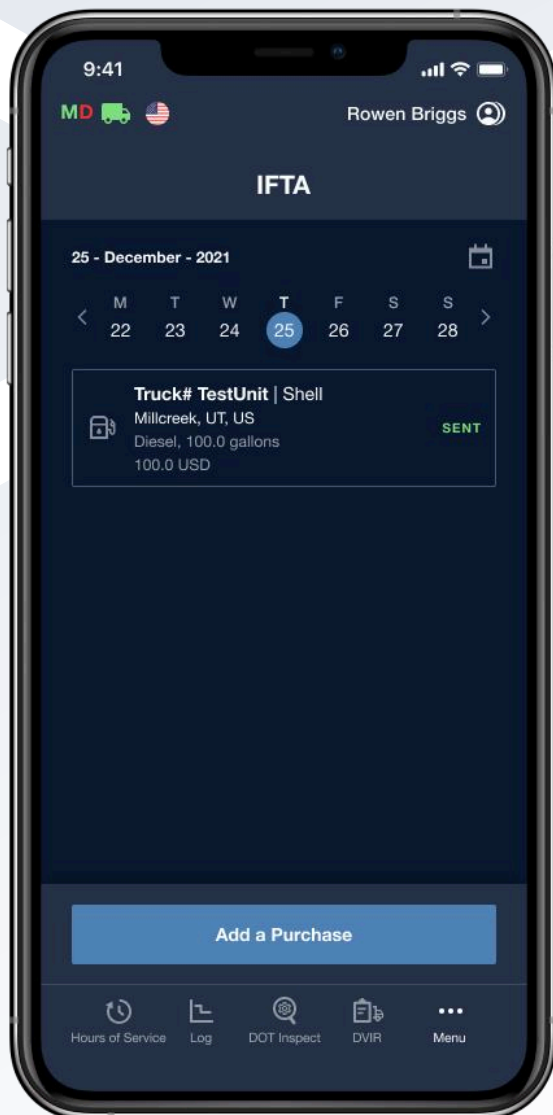
Open the Rules menu if you want to check or change your current country's rules (from the USA to Canada or vice versa).

Here you can also see the HOS timing according to the ruleset you choose.



Fuel Receipts & IFTA

24HOS ELD users are able to add Fuel Receipts for their fuel purchases using the IFTA menu. This option allows drivers and fleet managers to keep track of all fuel purchases for their fleet, maintaining vehicle records acceptable for IFTA and IRP auditing. Fuel receipts are accessible from the Additional menu > IFTA.

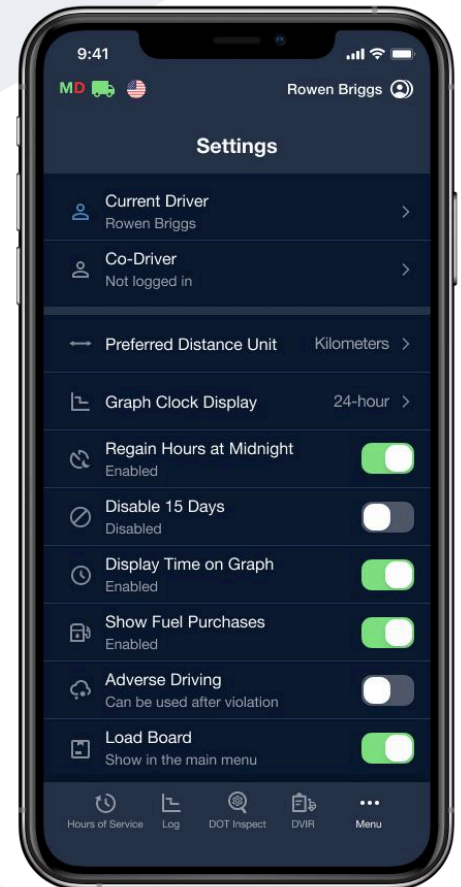


Settings

The Settings menu provides access to the basic app settings. Tap the Current driver or Co-driver (if you work in a team) section to check, change, or edit the drivers' personal data.

The Settings allow you to customize your 24HOS ELD app and choose a Preferred Distance Unit, a Graph Clock Display, and enable or disable additional options such as Regain Hours at Midnight, Load Board, and more.

Here you can also update signatures, upload logs, change the app theme, check the app version, set up Face ID or Touch ID, log out of the app, and more. The Settings menu is accessible from the Additional menu > Settings.



Status Switch

The Status Switch interface allows drivers to change their statuses during a shift. The list of driver's statuses includes Driving, On Duty, Off Duty, Sleeping Berth, and Border Crossing.

The Driving status is recorded automatically 3-10 seconds after a vehicle starts moving. When the driving ends, you should stop, wait 3-10 seconds until the ELD device recognizes the end of the Driving event and the Status Switch interface becomes active again. Only after that can you turn off the engine.

Please do not turn off the engine before the ELD device recognizes the end of the Driving event. In such a case, you may get stuck in the Driving status and corrupt your logs recording. If this has already happened, you need to turn on the engine again, wait for the end of the Driving event to be recognized, and change the status to the one you need.

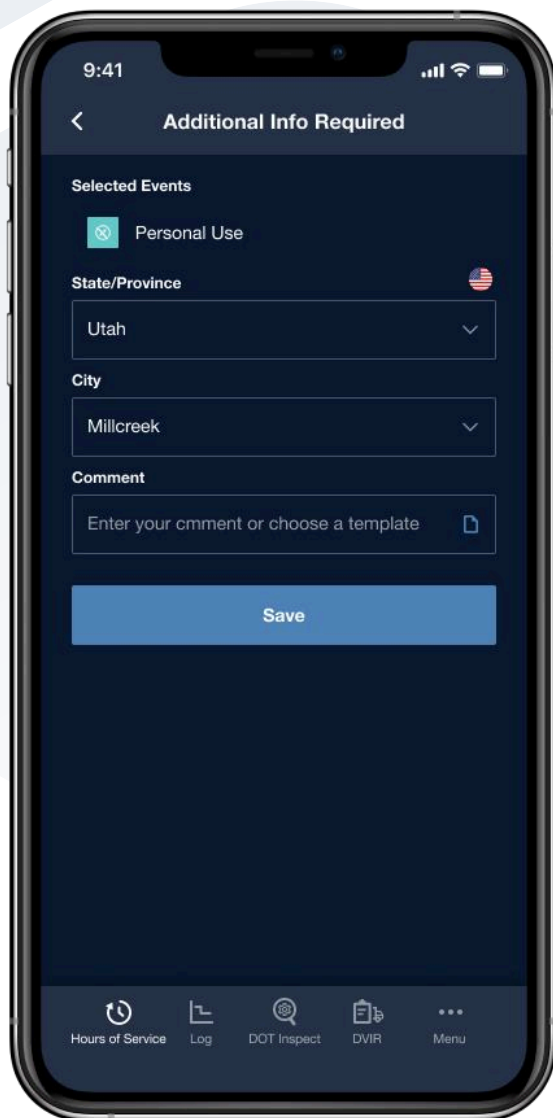
The 24HOS ELD app allows drivers to use manually added events like Personal Use and Yard Move. One can add comments, shipping documents, and trailers to any event. Manually added events should also be followed with the odometer readings.



Personal Use, Yard Move

To go for the Personal Use status, open the Status Switch interface and choose the Off-Duty status. After that, you will see a field for a comment where you can specify that you are in the Personal Use status now.

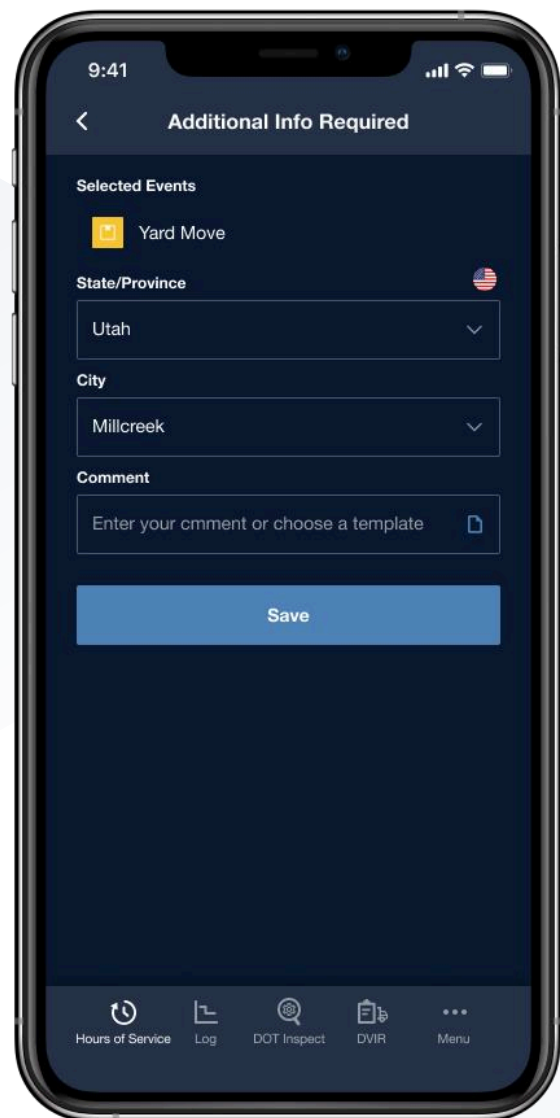
To change the status you should tap the Clear button, add a corresponding comment, and tap Save.



The image shows a smartphone screen with the 'Additional Info Required' form. The 'Selected Events' section has 'Personal Use' selected with a green icon. The 'State/Province' dropdown is set to 'Utah' with a US flag icon. The 'City' dropdown is set to 'Millcreek'. The 'Comment' field has a placeholder text 'Enter your comment or choose a template' and a document icon. A blue 'Save' button is at the bottom. The bottom navigation bar includes icons for 'Hours of Service', 'Log', 'DOT Inspect', 'DVIR', and 'Menu'.

To go for the Yard Move status, open the Status Switch interface and choose the On-Duty status. After that, you will see a field for a comment where you can specify that you are in the Yard Move status now.

To change the status you should tap the Clear button, add a corresponding comment, and tap Save.



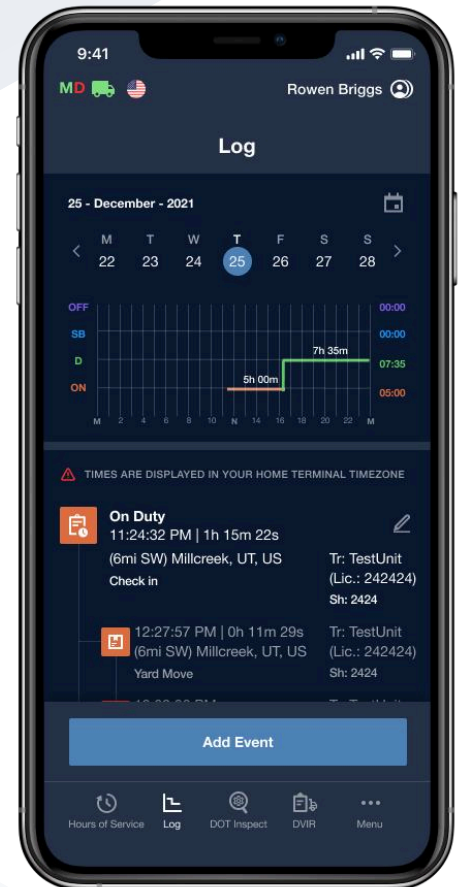
The image shows a smartphone screen with the 'Additional Info Required' form. The 'Selected Events' section has 'Yard Move' selected with a yellow icon. The 'State/Province' dropdown is set to 'Utah' with a US flag icon. The 'City' dropdown is set to 'Millcreek'. The 'Comment' field has a placeholder text 'Enter your comment or choose a template' and a document icon. A blue 'Save' button is at the bottom. The bottom navigation bar includes icons for 'Hours of Service', 'Log', 'DOT Inspect', 'DVIR', and 'Menu'.

Logbook

Open the Log menu to see the Log Form with all the details regarding a driver, vehicle, and carrier. The Log Graphs provide a graphical representation of the driver's status switches and hours of service during a shift. Navigate between the dates with the help of the <> button.

Use the Add Event button to add a missing event to your logs. Use the Pencil button to edit existing events in your logs.

Both adding and editing options are legally allowed by the FMCSA regulations. Nevertheless, those are not for everyday use but rather for situations, when the data was entered incorrectly or by mistake.



DOT Inspection & Data Transfer

The DOT Inspection menu provides summaries of all the collected data regarding a driver, truck, and trip. You may also use this menu to transfer the data to FMCSA during the DOT inspection, certify your logs, or view unidentified records.

Tap the Start Inspection button and check if your logs are ready to be transferred to the safety officials. If everything is OK, tap the Transfer Data to Roadside Inspector button and choose the method of sending your logs:

- send it to the Web Services (FMCSA);
- send it to the FMCSA email;
- send it to the personal email (provided by the inspector).

If you select personal email, you need to enter the recipient's address, add a comment, and choose a reporting period. The reporting period will vary depending on the rules of the country in which you operate.

The 'Dot Inspect' screen displays a calendar for December 2021 with the 25th selected. Below the calendar are two buttons: 'Certify Records' and 'View Unidentified Records'. A table of inspection data is shown below these buttons.

Driver Name	Co-Driver Name	Truck Number	Trailer Number
Rowen Briggs	Frank Steinfeldt	TestUnit	24
Odometer	Engine Hours	Carrier	ELD Provider
0.00	0.00	Test 24 HOS LLC	24 HOS ELD
Shipping ID	ELD Exempt	Time Zone	Unidentified Rec.
2424	No	US/Central	0
USDOT	Miles Today	24 Per. Start Time	Truck VIN
2424242	0.00	Midnight	4V4NC9EH 4HN972386
Current Location	Licence Number		

At the bottom of the screen is a large blue button labeled 'Start Inspection'.

The 'Data Transfer' screen shows three radio button options for the 'Transfer Method': 'Email (personal)' (selected), 'Email to FMCSA', and 'Web Services (FMCSA)'. Below these is an 'Email' input field containing 'safety24hos@gmail.com'. A 'Comment' input field with the placeholder 'Enter your comment here' is also present. At the bottom is a large blue button labeled 'Send'.

Driver Vehicle Inspection Report

To stay compliant with the FMCSA regulations, every driver of a commercial motor vehicle is obliged to complete the Driver Vehicle Inspection Report (DVIR) on a daily basis.

To complete the report, open the DVIR menu and tap the Add a Report. Here you can also find all the reports that were created previously.

For the new DVIR report, you need to enter your location (downloaded automatically), choose your truck or trailer, enter the truck and odometer number, and finally specify the truck and trailer defects if there are any. Leave a comment and point out if the vehicle you currently operate is safe for driving or not.

